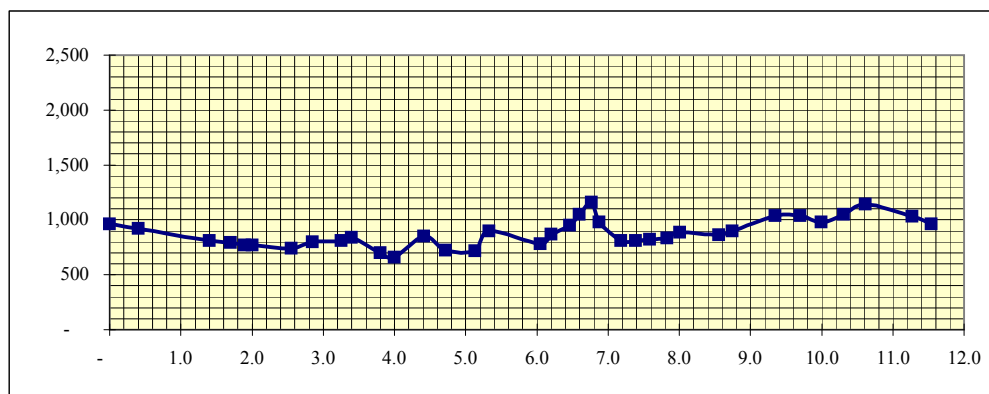


Robbers Cave, Wilburton OK

From OuachitaMaps.com

Robbers Cave Mega Loop			Day	Sect	Cum	Elev	Elev
Location	WP		Miles	Miles	Miles	Feet	Change
Robbers Cave Parking Lot	RC-01	In Sat		-	-	960	
Highway 2-NW Double Falls Rd	RC-02			0.4	0.4	920	(40)
Multi Use Tr Leaves Road	RC-03			1.0	1.4	810	(110)
Gully				0.3	1.7	790	(20)
Coon Creek				0.2	1.9	770	(20)
Coon Creek Ledge	RC-04			0.1	2.0	770	-
Clearing at Lake				0.6	2.6	740	(30)
Pipeline				0.3	2.9	800	60
Join Equestrian Trail				0.4	3.3	810	10
Leave Equestrian Trail				0.2	3.4	840	30
Highway 2	RC-05			0.4	3.8	700	(140)
Low Water Dam	RC-06			0.2	4.0	660	(40)
High Point				0.4	4.4	850	190
Lake Carlton Dam				0.3	4.7	720	(130)
Leave Lake Shore				0.4	5.1	715	(5)
On Bluff				0.2	5.3	900	185
Gully				0.7	6.1	780	(120)
Horse Camp Spur				0.2	6.2	870	90
Jct Equestrian Trail				0.3	6.5	950	80
Park Road w/ Sign	RC-07			0.1	6.6	1,050	100
Pipeline				0.2	6.8	1,160	110
Jct Equestrian Trail				0.1	6.9	980	(180)
Jct Equestrian Trail				0.3	7.2	810	(170)
Rocky Top Camp	RC-8	Sat	7.4	0.2	7.4	810	-
Ash Creek Rd	RC-9			0.2	7.6	820	10
Creek				0.2	7.8	835	15
Road				0.2	8.0	885	50
Rough Canyon				0.5	8.6	860	(25)
Jct Cattail Pond Loop	RC-10			0.2	8.8	900	40
Cattail Pond	RC-11			0.6	9.4	1,040	140
Creek				0.4	9.7	1,035	(5)
Jct Rough Canyon Trail	RC-12			0.3	10.0	980	(55)
Lost Lake Camp	RC-13			0.3	10.3	1,050	70
Jct Multi Use Tr				0.3	10.6	1,145	95
Road				0.7	11.3	1,029	(116)
Robbers Cave Parking Lot	RC-01	Out Sun	4.2	0.3	11.5	960	(69)
TOTAL				11.5	11.5		



Robbers Cave Hiking Trails
Wilburton OK
From OuachitaMaps.com

Mountain Trail South to North	WP	WP	Sect	Cum	Elev	Elev
		Miles	Miles	Miles	Feet	Change
Low Water Dam	RC-06		-	-	660	
High Point			0.4	0.4	850	190
Lake Carlton Dam			0.3	0.7	720	(130)
Leave Lake Shore			0.4	1.1	715	(5)
On Bluff			0.2	1.3	900	185
Gully			0.7	2.1	780	(120)
Horse Camp Spur			0.2	2.2	870	90
Jet Equestrian Trail			0.3	2.5	950	80
Park Road w/ Sign	RC-07	2.6	0.1	2.6	1,050	100
Pipeline			0.2	2.8	1,160	110
Jet Equestrian Trail			0.1	2.9	980	(180)
Jet Equestrian Trail			0.3	3.2	810	(170)
Rocky Top Camp	RC-8	0.8	0.2	3.4	810	-
Ash Creek Rd	RC-9	0.2	0.2	3.6	820	10
Creek			0.2	3.8	835	15
Road			0.2	4.0	885	50
Rough Canyon			0.5	4.6	860	(25)
Jct Cattail Pond Loop	RC-10	1.2	0.2	4.8	900	40
TOTAL		4.8	4.8			

Rough Canyon Loop Clockwise	WP	WP	Sect	Cum	Elev	Elev
		Miles	Miles	Miles	Feet	Change
Robbers Cave Parking Lot	RC-01		-	-	960	
Road			0.6	0.6	1,115	155
Jct Cattail Pond Loop	RC-15	1.0	0.4	1.0	920	(195)
Leave Cattail Pond Loop	RC-12	0.5	0.5	1.4	980	60
Lost Lake Camp	RC-13	0.3	0.3	1.7	1,050	70
Jct Multi Use Tr			0.3	2.0	1,145	95
Road			0.7	2.7	1,029	(116)
Robbers Cave Parking Lot	RC-01	1.2	0.3	3.0	960	(69)
TOTAL		3.0	3.0			

Cattail Pond Loop Trail Clockwise	WP	WP	Sect	Cum	Elev	Elev
		Miles	Miles	Miles	Feet	Change
Jct Rough Canyon Tr	RC-15		-	-	920	
Leave Rough Canyon Tr	RC-12	0.5	0.5	0.5	980	60
Creek			0.3	0.8	1,035	55
CatTail Pond	RC-11	0.7	0.4	1.1	1,040	5
Jct Mountain Tr	RC-10	0.6	0.6	1.7	900	(140)
Jct Rough Canyon Tr	RC-15	0.4	0.4	2.1	920	20
TOTAL		2.1	2.1			